



**MOTION***tek*

Leader Harmonious Drive Systems Co.,Ltd  
TEL :0086- 512-66362298/66560692  
FAX :0086- 512-66362325  
E-mail : sales@leaderdrive.com  
Add : No. 19 Muxu west Road,Mudu,Suzhou,P.R.China  
Postal Code : 215101  
<http://www.leaderdrive.com>



NO. LD2019-1-Y

®  
**Leaderdrive**

*leaderdrive*®

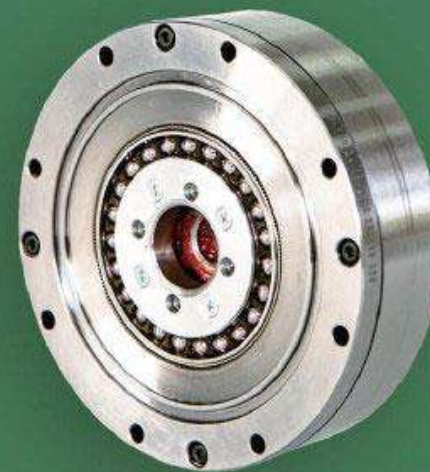
**苏州绿的谐波传动科技股份有限公司**

Leader Harmonious Drive Systems Co.,Ltd

LCSG High-Torque Cup-Shaped Flexspline

Strain Wave Gear

Product Introduction Manual



# Ordering Code

## Abbreviation for company

## Length Code of Flexspline

Code	Length
S	Standard
D	Dwarf

## Reduction Ratio

Note  
 1.30 50 80 100 120 160 are general reduction ratio  
 2.Reduction ratio can be designed according to customer's demand

## Structure Code

Code	Structure
C	Complete type
P	Component type
CL	Light weight of complete type

**L C S G — 14 ——— 50 — C — II**

## Shape Code of Flexspline

Code	Shape
C	Cup
H	Hollow

## Torque Code of Model

Code	Torque
G	High
null	Normal

## P.D.D of Flexible Gear

Code	PDD (mm)
14	35.6
17	43.2
20	50.8
25	63.5
32	81.3
40	102
50	127
58	147

## Connection Type

Code	Type
I	Standard type
II	Cross slipper type coupling

## LCSG-I series



LCSG-I series are high-torque models which have the same structure, with LCS-I series. However, their torque bearing capacity is improved by 30% compared with LCS series.

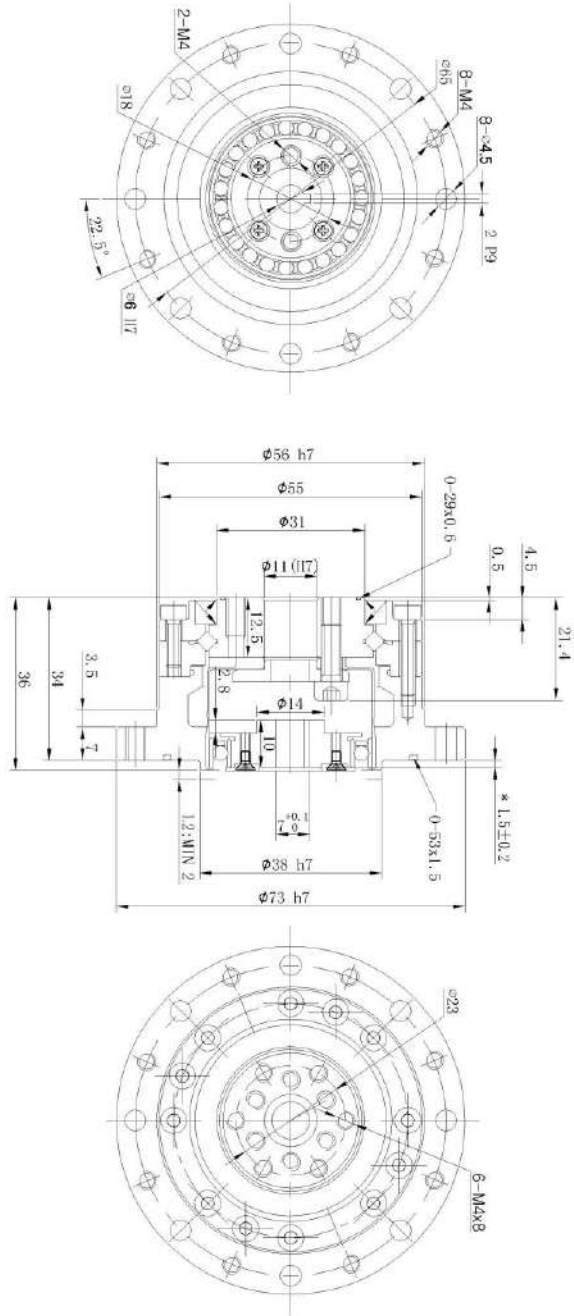
### Parameter Table

Item Model No	Reduction Ratio	Rated Torque at 2000r/min	Allowable Peak Torque at Start and Stop	Allowable Average Torque	Allowable Maximum Momentary Torque	Maximum Input Speed	Allowable Average Input Speed	Back lash	Weight	Design Life
		Nm	Nm	Nm	Nm	r/min	r/min	Arc-sec	Kg	Hour
14	50	6.6	23	8.6	43	8000	3500	≤10	0.51	10000
	80	9.6	29	13.5	57			≤10		15000
	100	9.6	34	13.5	66			≤10		15000
17	50	19.8	42	32.5	86	7000	3500	≤10	0.68	10000
	80	27.5	53	33.5	108			≤10		15000
	100	30	66	48.5	134			≤10		15000
	120	30	66	48.5	107			≤10		15000
20	50	32	69	42	121	6000	3500	≤10	0.98	10000
	80	42	91	58	158			≤10		15000
	100	50	102	61	182			≤10		15000
	120	50	108	61	182			≤10		15000
	160	50	113	61	182			≤10		15000
25	50	48	121	68.5	230	5500	3500	≤10	1.47	10000
	80	78	169	107.5	315			≤10		15000
	100	84	194	133	351			≤10		15000
	120	84	207	133	376			≤10		15000
	160	84	217	133	388			≤10		15000
32	50	94	267	133	472	4500	3500	≤10	3.19	10000
	80	146	376	206	702			≤10		15000
	100	169	411	267	800			≤10		15000
	120	169	436	267	848			≤10		15000
	160	169	459	267	848			≤10		15000
40	50	169	497	242	847	4000	3000	≤10	5.0	10000
	80	255	641	351	1210			≤10		15000
	100	328	702	460	1334			≤10		15000
	120	363	762	557	1458			≤10		15000
	160	363	800	557	1458			≤10		15000
50*	80	499	1163	642	2297	3000	2500	≤10	9.0	15000
	100	580	1211	823	2545			≤10		15000
	120	654	1334	1006	2545			≤10		15000
	160	654	1458	1042	3026			≤10		15000
58*	80	678	1828	951	3026	3000	2200	≤10	14.8	15000
	100	860	1964	1309	3927			≤10		15000
	120	921	2124	1470	4113			≤10		15000
	160	921	2272	1494	4236			≤10		15000

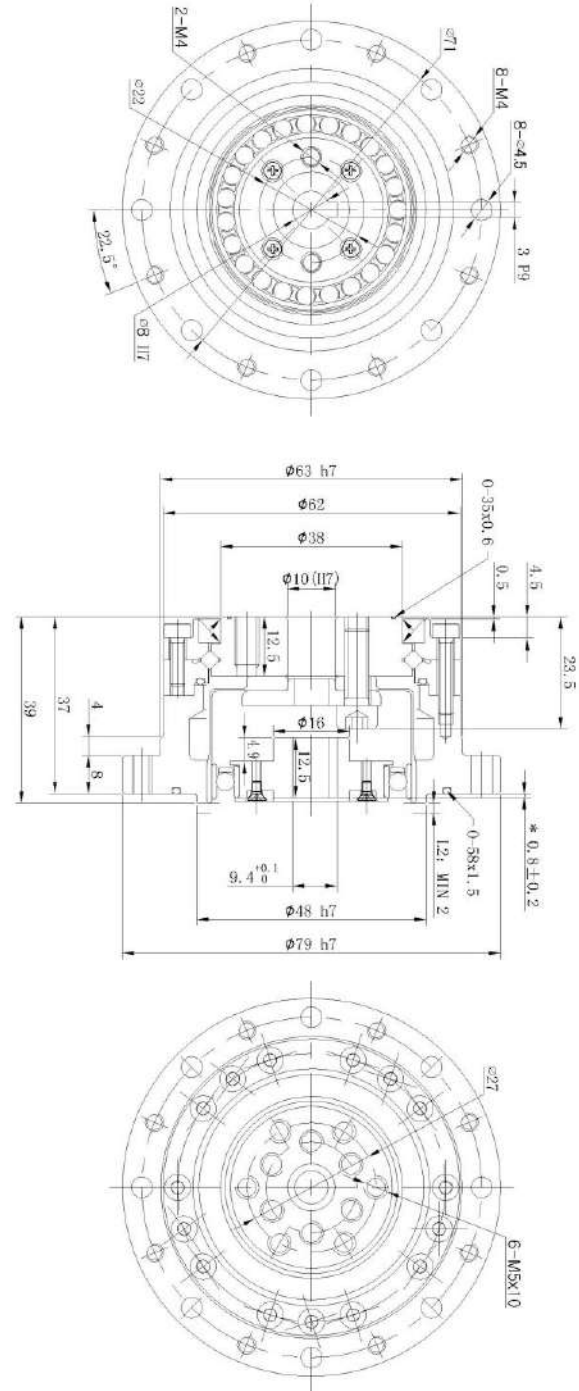
\* Consult factory

# LCSG-I Series Drawings

LCSG-14-XXX-C-I

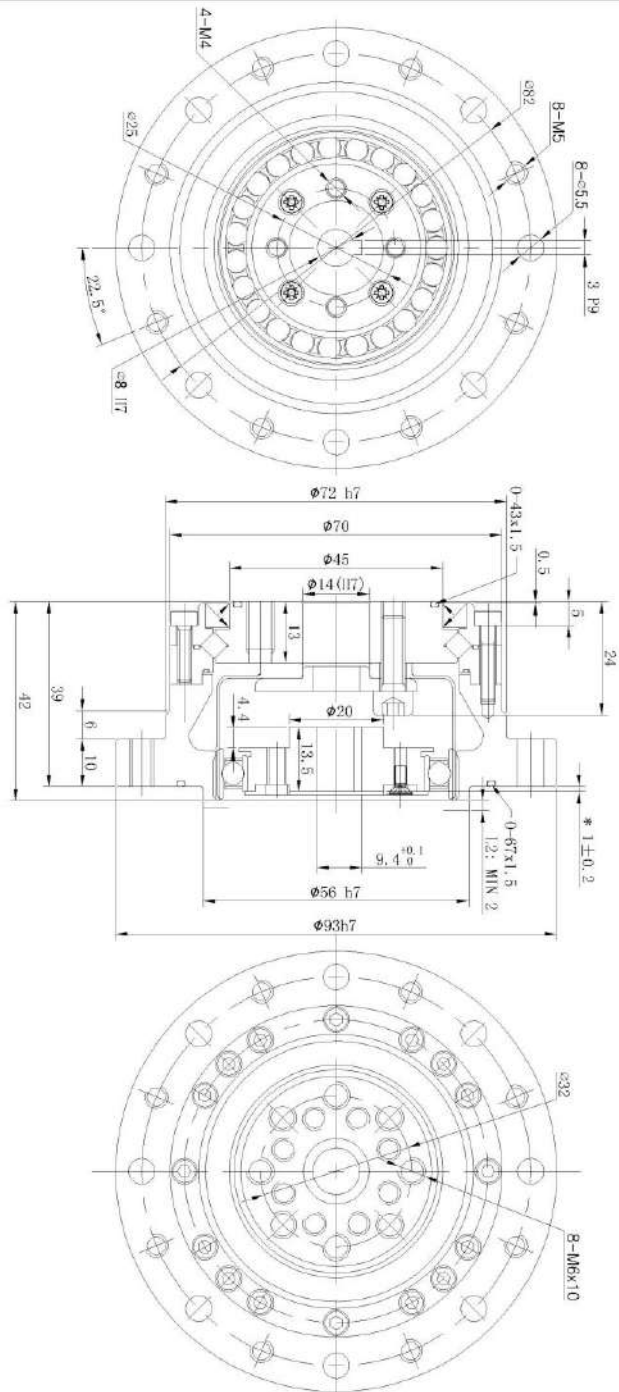


LCSG-17-XXX-C-I

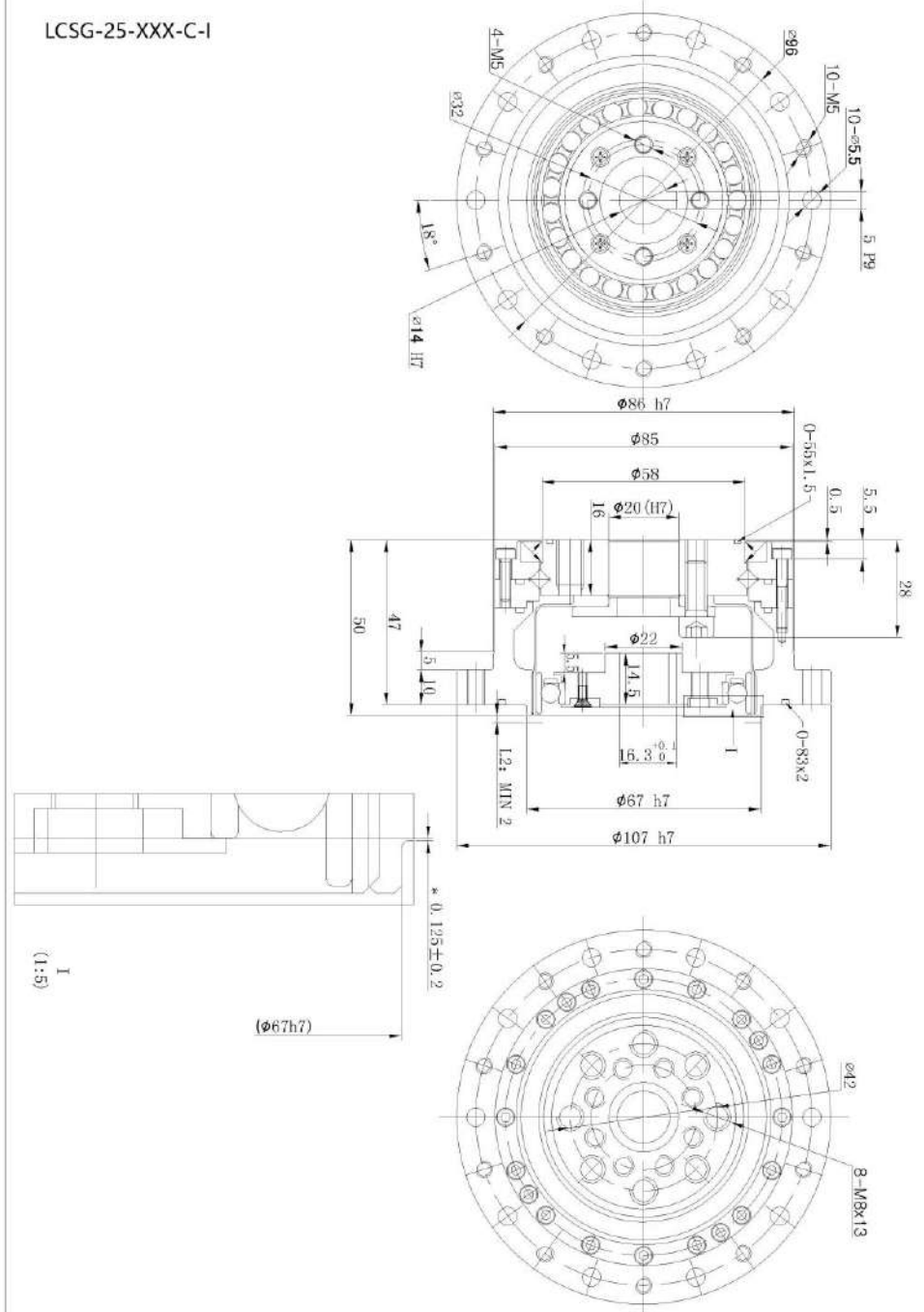


# LCSG-I Series Drawings

LCSG-20-XXX-C-I

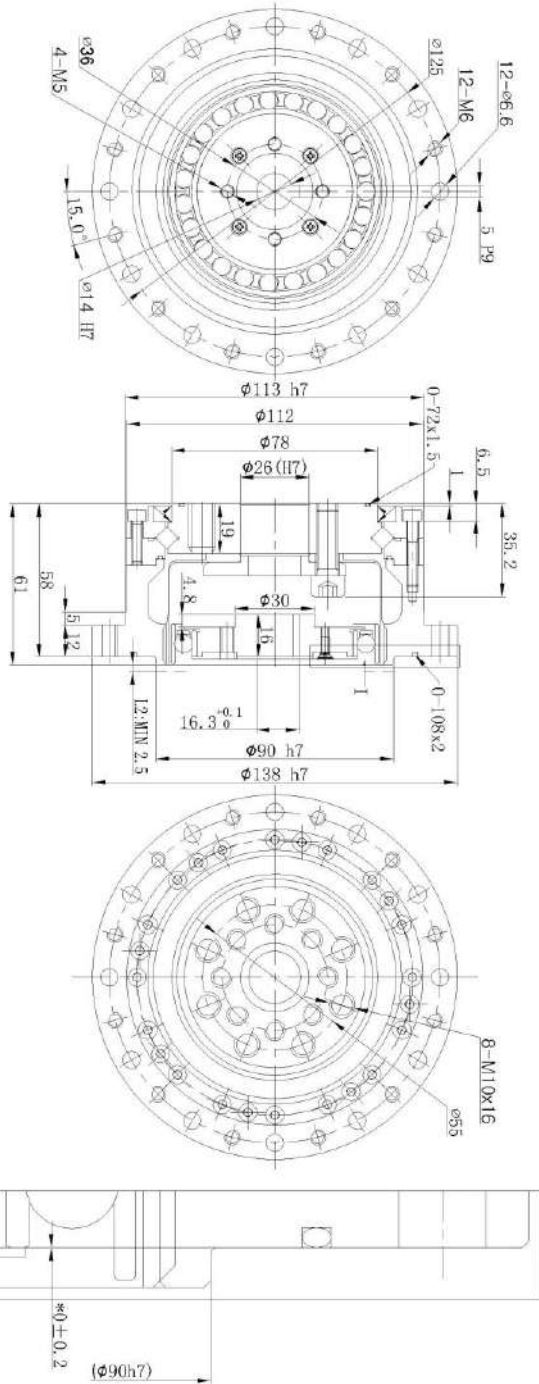


LCSG-25-XXX-C-I

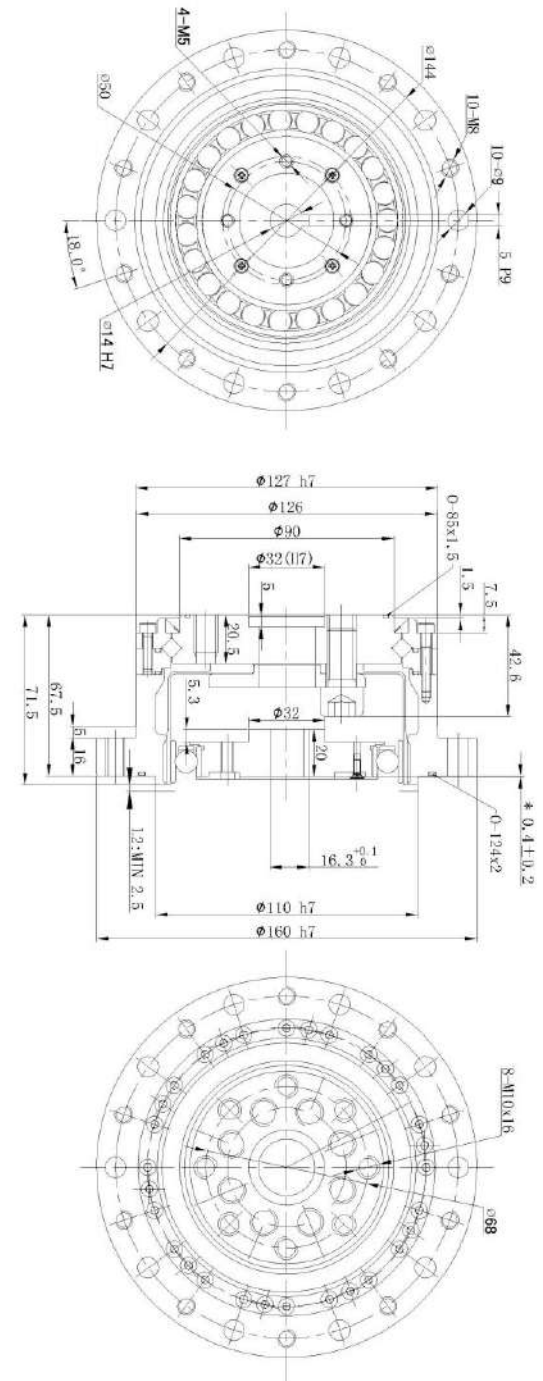


# LCSG-I Series Drawings

LCSG-32-XXX-C-I



LCSG-40-XXX-C-I



## LCSG-II series



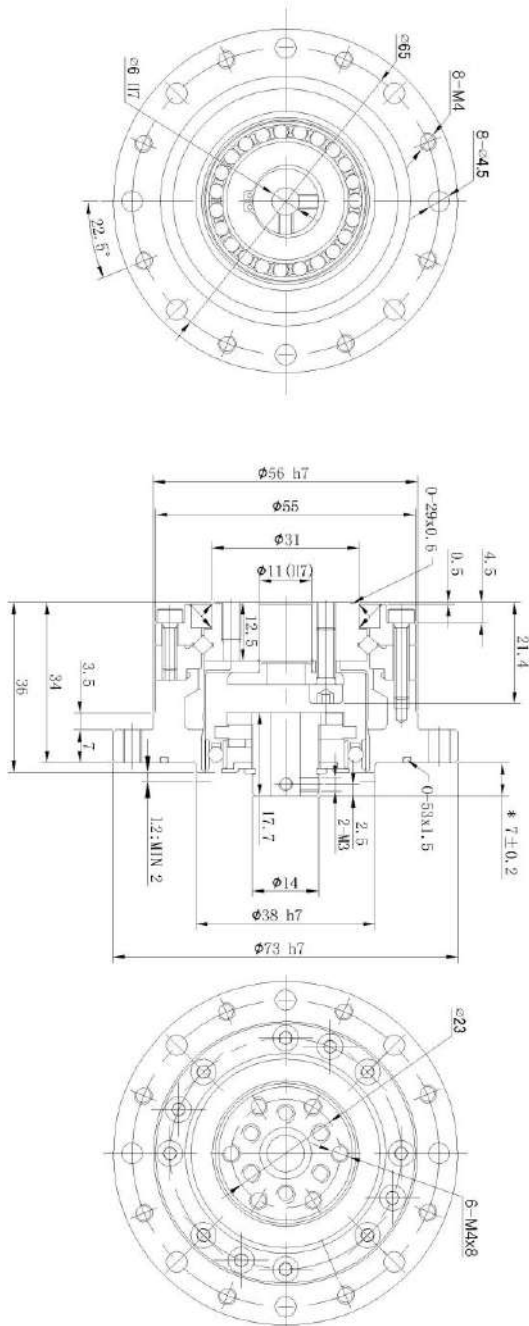
LCSG-II series are high-torque models which have the same structure, with LCS-II series. However, their torque bearing capacity is improved by 30% compared with LCS series.

### Parameter Table

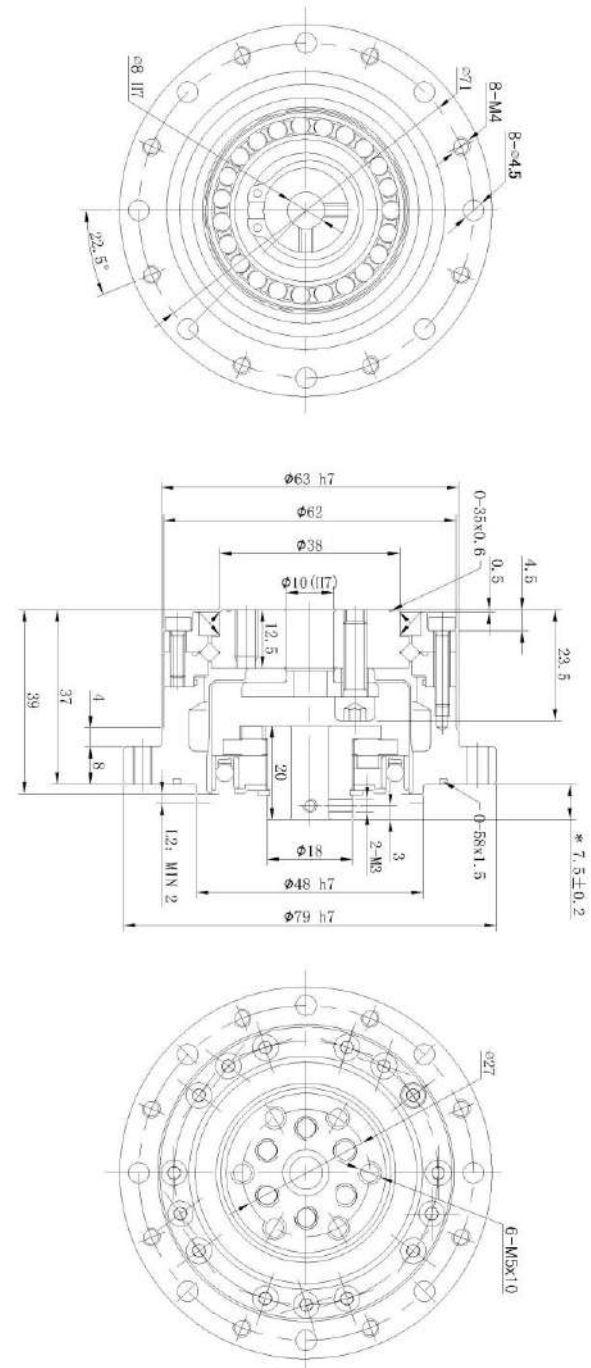
Item Model No	Reduction Ratio	Rated Torque at 2000r/min	Allowable Peak Torque at Start and Stop	Allowable Average Torque	Allowable Maximum Momentary Torque	Maximum Input Speed	Allowable Average Input Speed	Back lash	Weight	Design Life
		Nm	Nm	Nm	Nm	r/min	r/min	Arc sec	Kg	Hour
14	50	6.6	23	8.6	43	8000	3500	≤20	0.52	10000
	80	9.6	29	13.5	57			≤20		15000
	100	9.6	34	13.5	66			≤20		15000
17	50	19.8	42	32.5	86	7000	3500	≤20	0.69	10000
	80	27.5	53	33.5	108			≤20		15000
	100	30	66	48.5	134			≤20		15000
20	120	30	66	48.5	107	6000	3500	≤20	0.99	15000
	50	32	69	42	121			≤20		10000
	80	42	91	58	158			≤20		15000
25	100	50	102	61	182	5500	3500	≤20	1.48	15000
	120	50	108	61	182			≤20		15000
	160	50	113	61	182			≤20		15000
32	50	48	121	68.5	230	4500	3500	≤20	3.2	10000
	80	78	169	107.5	315			≤20		15000
	100	84	194	133	351			≤20		15000
40	120	84	207	133	376	4000	3000	≤20	5.0	15000
	160	84	217	133	368			≤20		15000
	50	94	267	133	472			≤20		10000
50*	80	146	376	206	702	3000	2500	≤20	9.0	15000
	100	169	411	267	800			≤20		15000
	120	169	436	267	848			≤20		15000
58*	160	169	459	267	848	3000	2200	≤20	14.8	15000
	50	169	497	242	847			≤20		10000
	80	255	641	351	1210			≤20		15000
50*	100	328	702	460	1334	3000	2500	≤20	9.0	15000
	120	363	762	557	1458			≤20		15000
	160	363	800	557	1458			≤20		15000
58*	80	459	1163	642	2297	3000	2200	≤20	14.8	15000
	100	580	1211	823	2545			≤10		15000
	120	654	1334	1005	2545			≤10		15000
58*	160	654	1458	1042	3025	3000	2200	≤10	14.8	15000
	80	678	1828	951	3026			≤10		15000
	100	860	1964	1309	3927			≤10		15000
58*	120	921	2124	1470	4113	3000	2200	≤10	14.8	15000
	160	921	2272	1494	4236			≤10		15000

# LCSG-II Series Drawings

LCSG-14-XXX-C-II



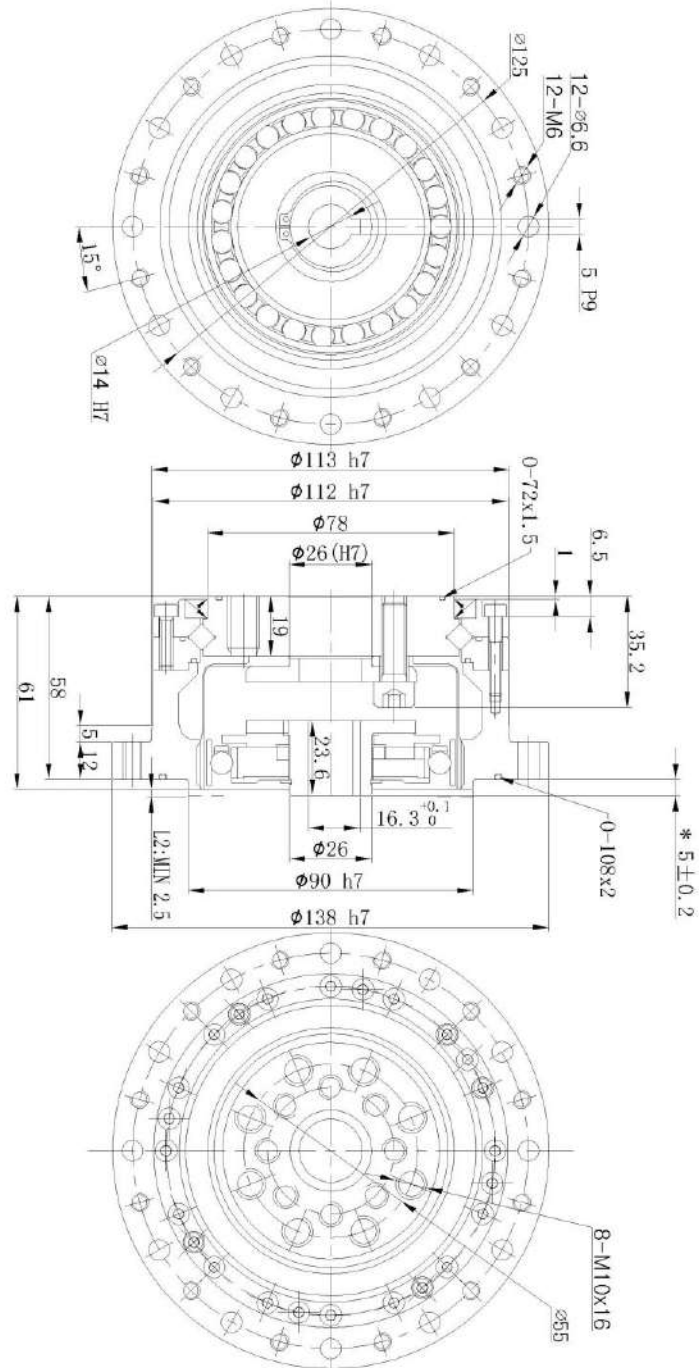
LCSG-17-XXX-C-II





# LCSG-II Series Drawings

LCSG-32-XXX-C-II



LCSG-40-XXX-C-II

